

DESCRIZIONE - DESCRIPTION

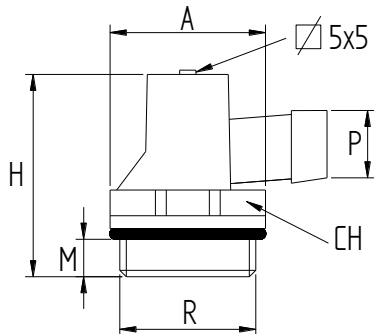
Rubinetto di scarico orientabile per radiatore M1/2"
con O-ring

Adjustable drain valve for radiator M1/2" with O-ring

*Robinet de déchargement orientable pour radiateur
M1/2" avec O-ring*


CARATTERISTICHE - FEATURES

- Corpo superiore girevole in NYLON
- Corpo inferiore e Vite in Ottone
- O-ring: EPDM
- finitura superficiale sabbata nichelata.
- filettature ISO 228/1
- PN 10: TEMP. : -20°C ÷ 120°C
- *Turning plastic head: NYLON*
- *Plug body and Screw: Brass*
- *O-ring: EPDM rubber*
- *Nickel plated finishing*
- *threading to ISO 228/1.*
- *PN 10: TEMP. : -20°C ÷ 120°C*

DIMENSIONI PRINCIPALI - LEADING DIMENSIONS


R	1/2	
A	24	
H	31	
P	10	
M	5	
CH	22	