

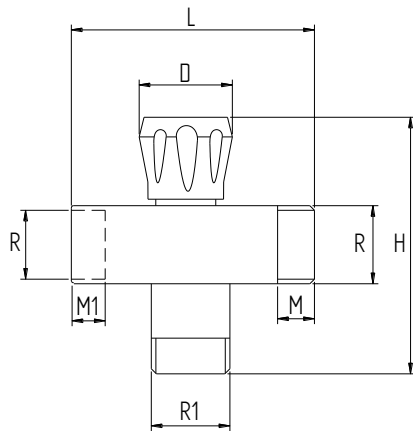
DESCRIZIONE - DESCRIPTION

Rubinetto attacco lavatrice 1/2"x3/4" M/M/F maniglia in ABS

Chromed tap 1/2"x3/4" for washing machine, ABS handle


CARATTERISTICHE - FEATURES

- corpo,e asta in ottone CW617N.
- guarnizione tenuta asta: gomma NBR
- maniglia in ABS cromato
- filettature ISO 228/1
- PN 10: TEMP. : -10°C ÷ 90°C
- brass CW617N body,and stem.
- gasket stem packing in NBR rubber.
- ABS handle, chromium plated
- threading to ISO 228/1.
- PN 10: TEMP. : -10°C ÷ 90°C

DIMENSIONI PRINCIPALI - LEADING DIMENSIONS


RxR1	1/2x3/4
D	34
L	59
H	72
M	12
M1	11