

DESCRIZIONE - DESCRIPTION

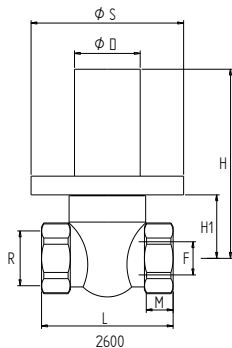
Valvola sfera incasso TONDO sfera estraibile F/F 1/2" con cappuccio-*Explorable built-in ball valve F/F 1/2" with ROUND cup art. 2600*

Valvola sfera incasso QUADRO sfera estraibile F/F 1/2" con cappuccio-*Explorable built-in ball valve F/F 1/2" with SQUARE cup art. 2650*

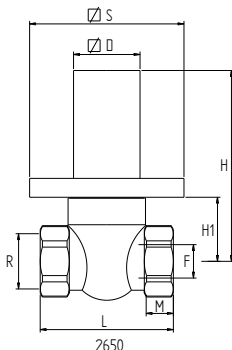

2600

2650
CARATTERISTICHE - FEATURES

- corpo, manicotto e sfera, in ottone CW617N.
- asta in ottone CW614N
- sfera lavorata con utensile in diamante, cromata.
- sedi in P.T.F.E. vergine.
- guarnizione tenuta asta: O-ring in gomma NBR
- leva di comando in ottone cromato.
- finitura superficiale sabbata.
- filettature ISO 228/1
- PN 25: TEMP. : -20°C ÷ 110°C
- *brass CW617N body, bonnet and ball.*
- *Brass CW614N stem*
- *ball ground by diamond-tipped tool, chromium plated.*
- *virgin P.T.F.E. seats.*
- *O-ring stem packing in NBR rubber.*
- *Brass Cap.*
- *Yellow finishing.*
- *threading to ISO 228/1.*
- *PN25: TEMP. : -20°C ÷ 110°C*

DIMENSIONI PRINCIPALI - LEADING DIMENSIONS


R	D	S	H	H1	L	M	F
1/2"	27.5	65	82	27	54.5	12.5	14



R	D	S	H	H1	L	M	F
1/2"	26	55	82	27	54.5	12.5	14