

DESCRIZIONE - DESCRIPTION

Valvola a sfera a passaggio totale con raccordi a compressione per tubo rame, BS EN 1254.

Full way ball valve with compression ends for copper pipe to BS EN 1254, made of brass nickel plated.



1330 ST

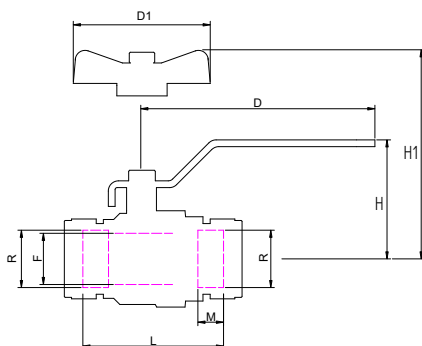


1330 T

CARATTERISTICHE - FEATURES

- corpo, manicotto e sfera in CW617N.
- premistoppa e asta in CW614N
- sfera lavorata con utensile in diamante, cromata.
- sedi in P.T.F.E.
- guarnizione tenuta asta: anello in PTFE
- leva di comando in acciaio plastificato ST, alluminio T
- finitura superficiale sabbata nichelata
- attacco rame a compressione seconda BS EN 1254
- PN 16: TEMP.: -20°C: +110°C
- *brass CW617N body and connection and ball.*
- *brass CW614N stuffing box and stem.*
- *ball ground by diamond-tipped tool, chromium plated.*
- *virgin P.T.F.E. seats.*
- *stem tightness: PTFE ring*
- *Steel lever with red plastic coating ST, aluminium T.*
- *Nickel plated finishing.*
- *Compression ends to BS EN 1254*
- *PN 16: TEMP.: -20°C: +110°C*

DIMENSIONI PRINCIPALI - LEADING DIMENSIONS



R	15	18	22	28	35
F	14	15	19	23	32
L	59	61	64	69	85
M	14	14.5	13	13	15
D1	54	54	54	70	70
H1	39	41	46	53	65
D	85	85	85	114	114
H	49	50	52	62	75

PERDITE DI CARICO - PRESSURE DROPS

R"	15	18	22	28	35
Kv	9	15	30	57	94

Diagramma Pressione-Temperatura Pressure-Temperature Diagram

