

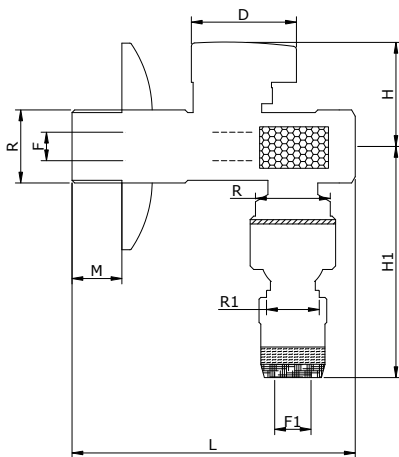
DESCRIZIONE - DESCRIPTION

Rubinetto sottolavabo a sfera cromato lucido, con filtro, snodo e rosone.

Under washer-basin angle valve made of forged brass, chromium plated with stainless steel filter, articulation and flange.


CARATTERISTICHE - FEATURES

- corpo, in ottone CW617N.
 - asta tappo sfera e ghiera in ottone CW614N
 - sfera lavorata con utensile in diamante, cromata.
 - sedi in P.T.F.E. vergine.
 - guarnizione tenuta asta: O-ring in gomma NBR
 - leva in ABS cromato
 - filtro in acciaio inox
 - rosone in acciaio inox
 - PN 10 -100°C
- *brass CW617N body.*
 - *bras CW614N stem ball cap and lock nut*
 - *ball ground by diamond-tipped tool, chromium plated.*
 - *virgin P.T.F.E. seats.*
 - *O-ring stem packing in NBR rubber.*
 - *ABS handle chromium plated*
 - *Stainless steel filter*
 - *Stainless steel base ring*
 - *PN 10 -100°C*

DIMENSIONI PRINCIPALI - LEADING DIMENSIONS


RxR1	1/2"x3/8"	
F	8	
L	75	
H	29	
H1	64	
F1	10.2	
M	13	
D	29	