

### DESCRIZIONE - DESCRIPTION

Valvola di sfogo aria automatica

*Automatic air vent*



**5805**

**5802**

**5830**

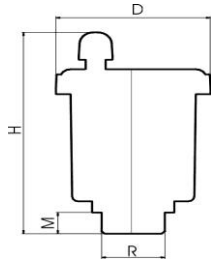
**5820**

### CARATTERISTICHE - FEATURES

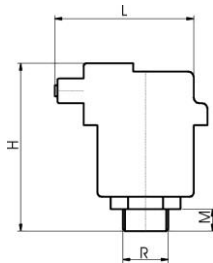
- Corpo in ottone CW617N.
- Galleggiante in POM
- PN 10, T: 110°C
- Portata: 30 L/min a 3 bar

- Brass CW617N body.
- Float POM
- PN 10, T: 110°C
- Flow Rate: 30 L/min to 3bar

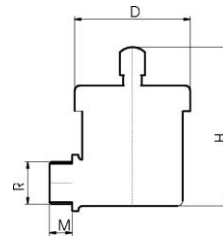
### DIMENSIONI PRINCIPALI - LEADING DIMENSIONS



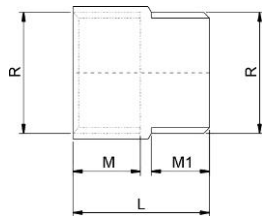
R	3/8	1/2
M	8.5	8.5
D	46	46
H	70	70
O-ring	Ø12.42x1.78	Ø17x2



R"	3/8	1/2
M	8	9
D	50	50
H	61	63



R"	3/8	1/2
M	8	9
D	46	46
H	62	62



R"	3/8	1/2
M	9	9
M1	9	9
L	25	25