

DESCRIZIONE / DESCRIPTION

Valvola a sfera da incasso a passaggio totale F/F sfera estraibile.

con cappuccio e rosone cromati – 2570

con deviatore e rosone cromati – 2580

con maniglia e rosone cromati – 2590

Explorable full way built-in ball valve F/F

with cover plate and top chromium plated – 2570

with cover plate and lever chromium plated – 2580

with cover plate and handle chromium plated - 2590

FOTO / PICTURE



2570



2580



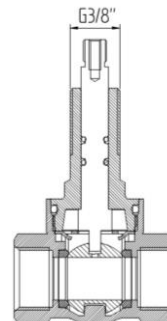
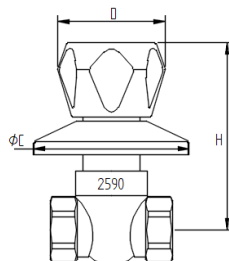
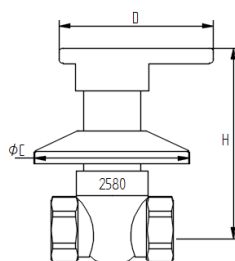
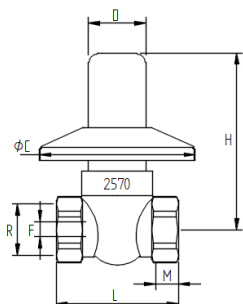
2590

CARATTERISTICHE / FEATURES

- corpo, sfera e asta in ottone.
- sfera lavorata con utensile in diamante, cromata.
- sedi in P.T.F.E. vergine.
- guarnizione tenuta asta: O-ring in gomma NBR
- leva di comando in metallo lucidato e cromato.
- finitura superficiale gialla
- filettature ISO 228/1
- PN 25: TEMP. : -20°C ÷ 110°C
- *brass body, ball, stem.*
- *ball ground by diamond-tipped tool, chromium plated.*
- *virgin P.T.F.E. seats.*
- *O-ring stem packing in NBR rubber.*
- *Metal handle polished and chromium plated.*
- *Yellow finishing.*
- *threading to ISO 228/1.*
- *PN 25: TEMP. : -20°C ÷ 110°C*

DIMENSIONI PRINCIPALI / LEADING DIMENSIONS

R	D	H	D	H	D	H	L	M	C	F
	2570	2570	2580	2580	2590	2590				
1/2"	26	80	69	81	46	81	53	12	69	14



PERDITE DI CARICO / PRESSURE DROPS

R"	1/2
Kv	15

$$\Delta P \text{ [mm H}_2\text{O]} = 10.000 \times \left[\frac{G \text{ [mc/h]}}{Kv} \right]^2$$