

DESCRIZIONE - DESCRIPTION

Mini valvola a sfera serie Mignon F/F-M/F cromata lucida con leva in alluminio.

MIGNON ball valve polished chrome mini F/F-M/F black aluminium lever



2340C



2340N



2350C

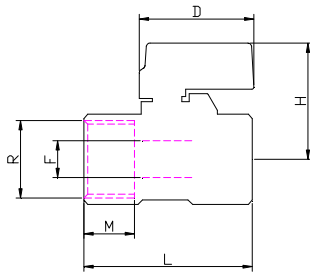


2350N

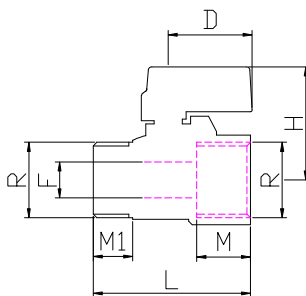
CARATTERISTICHE - FEATURES

- corpo, sfera, e asta in ottone CW617N.
- sfera lavorata con utensile in diamante, cromata.
- sedi in P.T.F.E. vergine.
- guarnizione tenuta asta: o-r in gomma NBR
- leva di comando in alluminio.
- finitura superficiale cromata lucida
- filettature ISO 228/1
- PN 10: TEMP. : -20°C ÷ 120°C
- brass CW617N body, ball, and stem.
- ball ground by diamond-tipped tool, chromium plated.
- virgin P.T.F.E.
- o-ring stem packing in NBR rubber.
- Aluminium lever with plastic coating
- *Polished chrome finishing*
- threading to ISO 228/1.
- PN 10: TEMP. : -20°C ÷ 120°C

DIMENSIONI PRINCIPALI - LEADING DIMENSIONS



R	1/4	3/8	1/2
D			32
H			30
L			45.5
M			11
F			10



R"	1/4	3/8	1/2
D		32	32
H		28	30
L		40	45.5
M		9	11
F		8	10

PERDITE DI CARICO - PRESSURE DROPS

R"	1/4	3/8	1/2
Kv	/	3	5.5

$$\Delta P [\text{mm H}_2\text{O}] = 10.000 \times \left[\frac{G [\text{mc/h}]}{Kv} \right]^2$$