

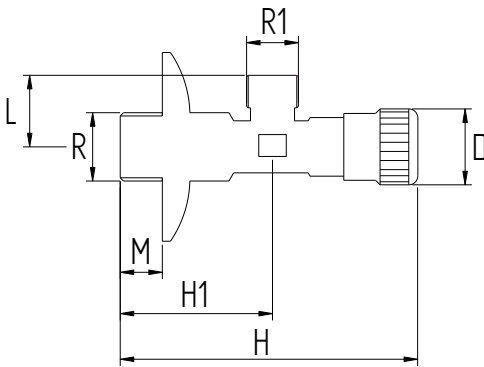
DESCRIZIONE - DESCRIPTION

Rubinetto sotto-lavabo ad angolo in ottone stampato, cromato lucido.

Under washer-basin angle valve made of forged brass, chromium plated


CARATTERISTICHE - FEATURES

- Corpo in ottone
- vitone in ottone con doppia tenuta: doppio O-ring
- guarnizione in NBR
- maniglia in ABS cromato
- rosone in acciaio inox.
- PN 10 – 100°C
- *brass body*
- *brass headwork with double tightness: double O-ring*
- *NBR gasket*
- *ABS handle, chromium plated*
- *stainless steel base ring*
- *PN 10 – 100°C*

DIMENSIONI PRINCIPALI - LEADING DIMENSIONS


RxR1	1/2"x3/8"	1/2"x1/2"	1/2"x3/4"
F	8	8	8
L	21	22	25
H1	35	34	44
H	78	77	87
M	13	13	15
D Ø	25	25	25